

Sabal Ridge

9230 SABALRIDGE GROVE PL, TAMPA, FL 33610 · TEL: 813-579-1130 (hearing impaired call 711)
 FAX: 813-579-1131 · E-MAIL: sabalridge@richmanmgt.com · www.sabalridgefl.com
 f www.facebook.com/SableRidgeApartments



Directions:

From I-75 South: Take exit #260 Dr. Martin Luther King Jr. Blvd. E (SR-574 W) toward the State Fairgrounds. Travel 1.6 miles and turn right onto Clewis Avenue. Turn left into Sabal Ridge. Leasing office is straight ahead inside the clubhouse.

From I-75 North: Take Exit #260B Dr. Martin Luther King Jr. Blvd. E (SR-574 W) toward the State Fairgrounds. Travel 1.6 miles and turn right onto Clewis Avenue. Turn left into Sabal Ridge. Leasing office is straight ahead inside the clubhouse.

A SPECTACULAR BRAND NEW APARTMENT COMMUNITY

All the amenities you dream of... and more

A spectacular clubhouse featuring:

- State-of-the-art fitness center with LifeFitness cardiovascular machines and Vectra® strength training equipment
- Full-service resident business office including computers with Internet
- Grand club room with coffee bar and comfortable seating area
- Fun-filled game/activity room with Nintendo Wii system, computers, crafts & more
- Convenient laundry center including large capacity machines
- Complimentary WiFi "Hot Spots"

Plus a wonderland of recreation for the entire family

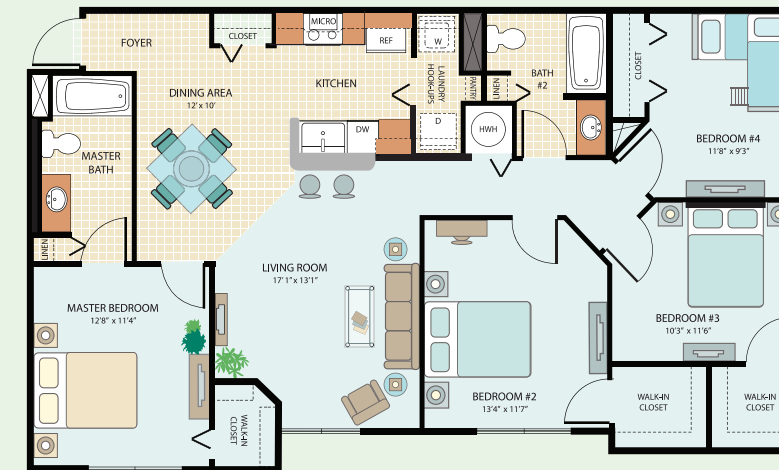
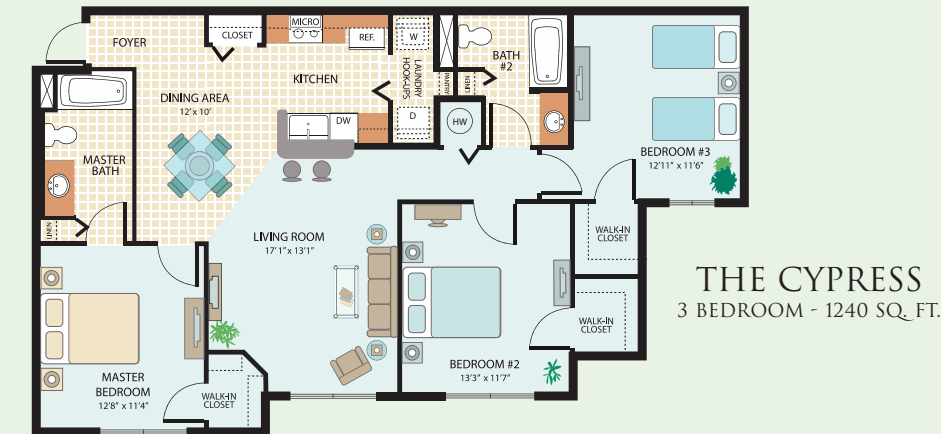
- Resort style outdoor pool & kiddie pool
- Scenic walking trail
- Picnic pavilion with grill area
- Tot lot/playground area
- Covered car care center
- Beautifully landscaped grounds

Professional services that you deserve

- Professional on-site management
- 24-hour emergency maintenance
- Community social, recreational and educational services



THE PALM
2 BEDROOM - 974 SQ. FT.



THE SANDS
4 BEDROOM - 1364 SQ. FT.

Dimensions and square footage are approximate, variations may occur in some floor plans.

Inside your home...

Apartment Amenities

- Spacious two, three and four bedroom floor plans
- Fully equipped kitchens with black GE Energy Star appliances and built-in microwave
- Shaker style caramel cabinetry and granite-like countertops in kitchens and baths
- Ceramic tile floors in all apartments
- Certified Green Label berber carpet
- Decorative Energy Star lighting fixtures
- Separate dining area
- Two full baths
- Walk-in closets
- Full-size washer/dryer connections
- Individually controlled central air conditioning with programmable thermostats
- Ceiling fans throughout
- Majestic water views in select units



All features and amenities are subject to change.